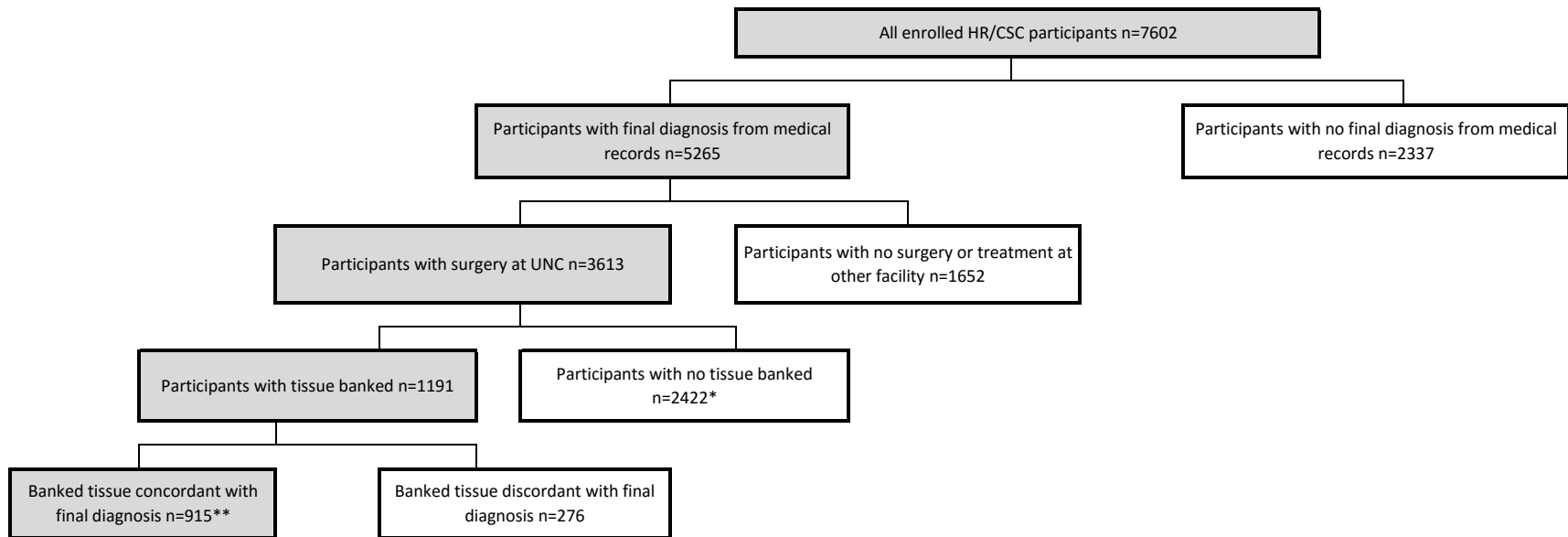


**UNC Health Registry/Cancer Survivorship Cohort
Tissue procurement flowchart
Based on data collected up to 31 August, 2016**



*The vast majority are due to insufficient tumor tissue available for banking.

**Requires confirmation of tissue availability in the tissue procurement facility. While 915 HR/CSC subjects had leftover tissue for research banking many more may have tumor tissue available for research through the clinical pathology laboratory.